

MONTHLY MEMBERSHIP PROGRESS REPORT

LOCATION INDIA

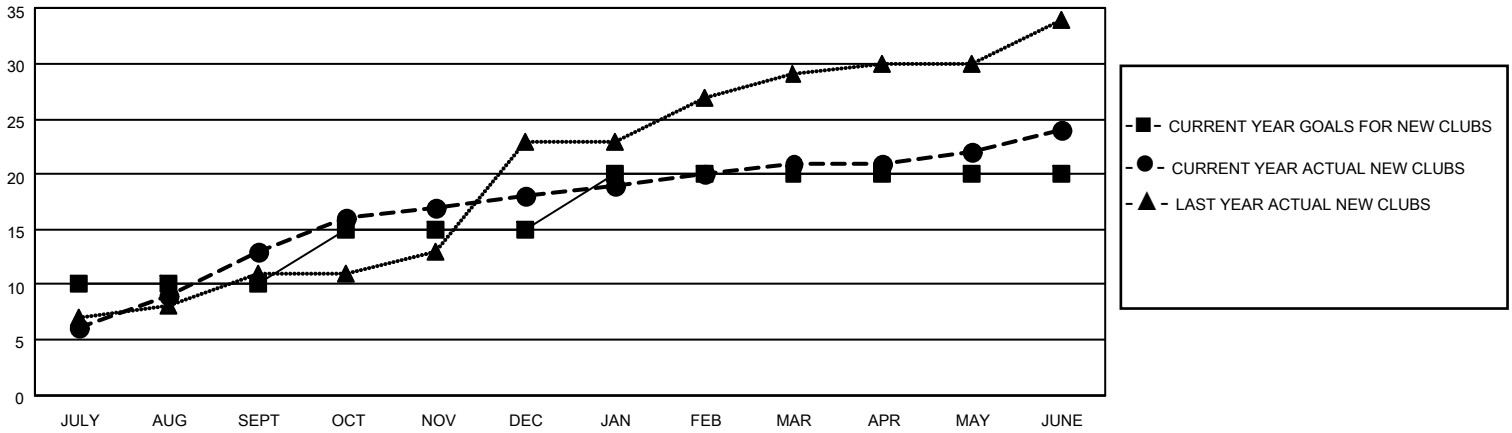
District 317 A

Results as of: 6/30/2022

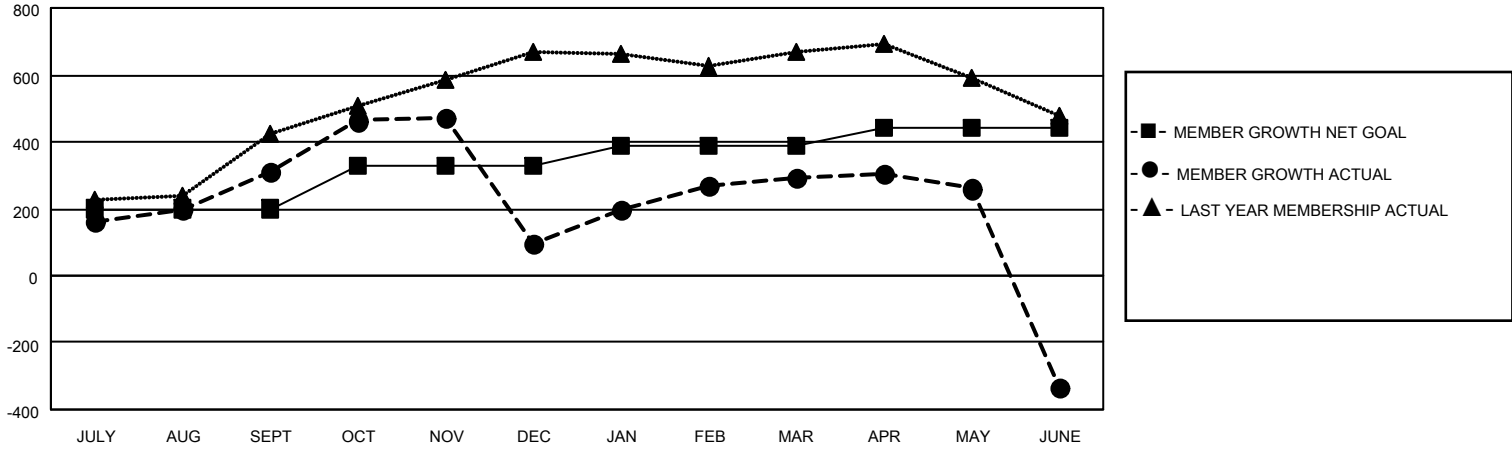
Clubs			
RESULTS FOR 2021-2022			
QUARTER	NEW CLUB GOAL	NEW CLUBS	DROPPED CLUBS
JULY/AUG/SEPT	10	13	5
OCT/NOV/DEC	5	5	8
JAN/FEB/MAR	5	3	1
APR/MAY/JUNE	0	3	20

Members			
RESULTS FOR 2021-2022			
QUARTER	MEMBER GROWTH NET GOAL	MEMBER GROWTH ACTUAL	DROPPED MEMBERS ACTUAL (including transfers)
JULY/AUG/SEPT	200	521	194
OCT/NOV/DEC	130	287	487
JAN/FEB/MAR	60	275	51
APR/MAY/JUNE	50	339	930

GOALS AND ACTUAL NEW CLUBS CUMULATIVE



GOALS AND ACTUAL MEMBERS CUMULATIVE



DROPPED CLUBS: 34

123 CLUBS OF 212 ADDED 1 OR MORE NEW MEMBERS

GENDER DISTRIBUTION

MALE	3,485 (65.38%)
FEMALE	1,845 (34.62%)
NON BINARY	0 (0.00%)
PREFER NOT TO ANSWER	0 (0.00%)

DROPPED MEMBERS

DECEASED	23
CLUB CANCELLED	759
OTHER	881
TOTAL	1,663

[CLICK HERE FOR CUMULATIVE MEMBERSHIP DATA](#)

TOTAL FAMILY UNIT MEMBERS	2,713
FAMILY MEMBERS PAYING HALF DUES	1,521